



*** TENSION BAND**

* REGULAR 14 GA. x 3/4"



RECORD #	QTY.	WEIGHT	SIZE	QTY.	PRICE/Ea.	PRICE/Ea.
03782	1 Ea.	.12	1 3/8"			* CALL *
03783	1 Ea.	.14	1 5/8"			* CALL *
03784	1 Ea.	.16	1 7/8"			* CALL *
03785	1 Ea.	.18	2 3/8"			* CALL *
03786	1 Ea.	.22	2 7/8"			* CALL *
03787	1 Ea.	.26	3 1/2"			* CALL *
03788	1 Ea.	.29	4"			* CALL *
03789	1 Ea.	.32	4 1/2"			* CALL *

* HEAVY 11 GA. x 1"



RECORD #	QTY.	WEIGHT	SIZE	QTY.	PRICE/Ea.	PRICE/Ea.
03808	1 Ea.	.26	1 3/8"			* CALL *
03809	1 Ea.	.30	1 5/8"			* CALL *
03810	1 Ea.	.33	1 7/8"			* CALL *
03811	1 Ea.	.39	2 3/8"			* CALL *
03812	1 Ea.	.45	2 7/8"			* CALL *
03813	1 Ea.	.52	3 1/2"			* CALL *
03814	1 Ea.	.59	4"			* CALL *
03815	1 Ea.	.66	4 1/2"			* CALL *
03816	1 Ea.	.85	6 5/8"			* CALL *
03817	1 Ea.	1.08	8 5/8"			* CALL *

*** BRACE BAND**

* REGULAR 14 GA. x 3/4"



RECORD #	QTY.	WEIGHT	SIZE	QTY.	PRICE/Ea.	PRICE/Ea.
03889	1 Ea.	.13	1 3/8"			* CALL *
03890	1 Ea.	.15	1 5/8"			* CALL *
03891	1 Ea.	.18	1 7/8"			* CALL *
03892	1 Ea.	.21	2 3/8"			* CALL *
03893	1 Ea.	.26	2 7/8"			* CALL *
03894	1 Ea.	.30	3 1/2"			* CALL *
03895	1 Ea.	.34	4"			* CALL *
03896	1 Ea.	.38	4 1/2"			* CALL *

* HEAVY 11 GA. x 1"



RECORD #	QTY.	WEIGHT	SIZE	QTY.	PRICE/Ea.	PRICE/Ea.
03916	1 Ea.	.20	1 3/8"			* CALL *
03917	1 Ea.	.25	1 5/8"			* CALL *
03918	1 Ea.	.28	1 7/8"			* CALL *
03919	1 Ea.	.34	2 3/8"			* CALL *
03920	1 Ea.	.39	2 7/8"			* CALL *
03921	1 Ea.	.45	3 1/2"			* CALL *
03922	1 Ea.	.50	4"			* CALL *
03923	1 Ea.	.57	4 1/2"			* CALL *
03924	1 Ea.	.80	6 5/8"			* CALL *
03925	1 Ea.	1.02	8 5/8"			* CALL *

*** EYE-TOP**
 * DIE CAST ALUMINUM



RECORD #	QTY.	WEIGHT	SIZE	QTY. PRICE/Ea.	PRICE/Ea.
04060	1 Ea.	.16	1 5/8" X 1 3/8"		* CALL *
04061	1 Ea.	.18	1 7/8" X 1 3/8"		* CALL *
04062	1 Ea.	.22	1 7/8" X 1 5/8"		* CALL *
04063	1 Ea.	.25	2 3/8" X 1 5/8"		* CALL *

*** PRESSED STEEL**



RECORD #	QTY.	WEIGHT	SIZE	QTY. PRICE/Ea.	PRICE/Ea.
04064	1 Ea.	.46	1 5/8" X 1 5/8"		* CALL *
04065	1 Ea.	.54	1 7/8" X 1 5/8"		* CALL *
04066	1 Ea.	.61	2 3/8" X 1 5/8"		* CALL *
04067	1 Ea.	1.08	2 7/8" X 1 5/8"		* CALL *

*** CAST IRON**



RECORD #	QTY.	WEIGHT	SIZE	QTY. PRICE/Ea.	PRICE/Ea.
04068	1 Ea.	.96	1 7/8" X 1 3/8"		* CALL *
04069	1 Ea.	1.24	1 7/8" X 1 5/8"		* CALL *
04070	1 Ea.	1.60	2 3/8" X 1 5/8"		* CALL *
04071	1 Ea.	2.52	2 7/8" X 1 5/8"		* CALL *
04072	1 Ea.	4.18	4" X 1 5/8"		* CALL *

*** BARB WIRE ARM BASE**
 * PRESSED STEEL



RECORD #	QTY.	WEIGHT	SIZE	QTY. PRICE/Ea.	PRICE/Ea.
04073	1 Ea.	.66	1 5/8" X 1 5/8"		* CALL *
04074	1 Ea.	.73	1 7/8" X 1 5/8"		* CALL *
04075	1 Ea.	.85	2 3/8" X 1 5/8"		* CALL *
04076	1 Ea.	1.30	2 7/8" X 1 5/8"		* CALL *

*** DOME CAP**
 * DIE-CAST ALUMINUM DOME



RECORD #	QTY.	WEIGHT	SIZE	QTY.	PRICE/Ea.	PRICE/Ea.
03992	1 Ea.	.06	1 3/8"			* CALL *
03993	1 Ea.	.09	1 5/8"			* CALL *
03994	1 Ea.	.10	1 7/8"			* CALL *
03995	1 Ea.	.14	2 3/8"			* CALL *
03996	1 Ea.	.20	2 7/8"			* CALL *
03997	1 Ea.	.22	4"			* CALL *
03998	1 Ea.	.56	6 5/8"			* CALL *

*** PRESSED STEEL**



RECORD #	QTY.	WEIGHT	SIZE	QTY.	PRICE/Ea.	PRICE/Ea.
04005	1 Ea.	.12	1 3/8"			* CALL *
04006	1 Ea.	.16	1 5/8"			* CALL *
04007	1 Ea.	.27	1 7/8"			* CALL *
04008	1 Ea.	.34	2 3/8"			* CALL *
04009	1 Ea.	.53	2 7/8"			* CALL *
04010	1 Ea.	.67	3 1/2"			* CALL *
04011	1 Ea.	1.00	4"			* CALL *
04012	1 Ea.	1.63	4 1/2"			* CALL *
04013	1 Ea.	3.50	6 5/8"			* CALL *

*** CAST IRON**



RECORD #	QTY.	WEIGHT	SIZE	QTY.	PRICE/Ea.	PRICE/Ea.
04014	1 Ea.	.46	1 5/8"			* CALL *
04015	1 Ea.	.53	1 7/8"			* CALL *
04016	1 Ea.	.72	2 3/8"			* CALL *
04017	1 Ea.	.84	2 7/8"			* CALL *
04018	1 Ea.	2.08	4"			* CALL *
04019	1 Ea.	2.56	4 1/2"			* CALL *
04020	1 Ea.	6.60	6 5/8"			* CALL *
04021	1 Ea.	10.40	8 5/8"			* CALL *

*** RAIL END**
*** DIE CAST ALUMINUM**



RECORD #	QTY.	WEIGHT	SIZE	QTY. PRICE/Ea.	PRICE/Ea.
04144	1 Ea.	.13	1 3/8"		* CALL *
04145	1 Ea.	.18	1 5/8"		* CALL *

*** PRESSED STEEL**



RECORD #	QTY.	WEIGHT	SIZE	QTY. PRICE/Ea.	PRICE/Ea.
04148	1 Ea.	.25	1 3/8"		* CALL *
04149	1 Ea.	.35	1 5/8"		* CALL *
04150	1 Ea.	.51	1 7/8"		* CALL *
04151	1 Ea.	.49	2 3/8"		* CALL *
04152	1 Ea.	.35	1 5/8" COMBO RAIL-END		* CALL *
04167	1 Ea.	.47	1 5/8" 2 HOLE RAIL-END		* CALL *
04168	1 Ea.	.59	1 7/8" 2 HOLE RAIL-END		* CALL *

*** CAST IRON**



RECORD #	QTY.	WEIGHT	SIZE	QTY. PRICE/Ea.	PRICE/Ea.
04153	1 Ea.	.64	1 3/8"		* CALL *
04154	1 Ea.	.68	1 5/8"		* CALL *
04155	1 Ea.	1.08	1 7/8"		* CALL *
04161	1 Ea.	.54	1 5/8" COMBO RAIL-END		* CALL *
04169	1 Ea.	.86	1 5/8" 2 HOLE RAIL-END		* CALL *

*** BARB WIRE EXTENSION ARM**



RECORD #	QTY.	WEIGHT	SIZE	QTY.	PRICE/Ea.	PRICE/Ea.
04079	1 Ea.	.75	S-SLOT			* CALL *
04080	1 Ea.	.75	"V" (Notched)			* CALL *
04081	1 Ea.	.75	UNIVERSAL			* CALL *

*** BARB WIRE ARM**

UPRIGHT PRESSED STEEL



RECORD #	QTY.	WEIGHT	SIZE	QTY.	PRICE/Ea.	PRICE/Ea.
04089	1 Ea.	1.40	1 5/8" X 1 5/8"			* CALL *
04090	1 Ea.	1.50	1 7/8" X 1 5/8"			* CALL *
04091	1 Ea.	1.60	2 3/8" X 1 5/8"			* CALL *

*** 45 DEGREE PRESSED STEEL**



RECORD #	QTY.	WEIGHT	SIZE	QTY.	PRICE/Ea.	PRICE/Ea.
04103	1 Ea.	1.65	1 5/8" X 1 5/8"			* CALL *
04104	1 Ea.	1.70	1 7/8" X 1 5/8"			* CALL *
04105	1 Ea.	1.80	2 3/8" X 1 5/8"			* CALL *

*** V ARM PRESSED STEEL**



RECORD #	QTY.	WEIGHT	SIZE	QTY.	PRICE/Ea.	PRICE/Ea.
04115	1 Ea.	2.75	1 7/8" X 1 5/8"			* CALL *
04116	1 Ea.	3.00	2 3/8" X 1 5/8"			* CALL *

*** CORNER BARB WIRE ARM**
*** PRESSED STEEL**



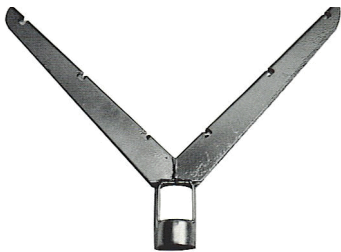
RECORD #	QTY.	WEIGHT	SIZE	QTY. PRICE/Ea.	PRICE/Ea.
04122	1 Ea.	3.02	2 3/8"		* CALL *
04123	1 Ea.	3.50	2 7/8"		* CALL *
04124	1 Ea.	5.50	4"		* CALL *

*** MALLEABLE IRON**



RECORD #	QTY.	WEIGHT	SIZE	QTY. PRICE/Ea.	PRICE/Ea.
04125	1 Ea.	4.00	2 3/8"		* CALL *
04126	1 Ea.	5.00	2 7/8"		* CALL *
04127	1 Ea.	7.60	4"		* CALL *

*** V ARM PRESSED STEEL**



RECORD #	QTY.	WEIGHT	SIZE	QTY. PRICE/Ea.	PRICE/Ea.
04128	1 Ea.	6.00	2 3/8"		* CALL *
04129	1 Ea.	6.30	2 7/8"		* CALL *
04130	1 Ea.	8.00	4"		* CALL *

*** V ARM MALLEABLE IRON**



RECORD #	QTY.	WEIGHT	SIZE	QTY. PRICE/Ea.	PRICE/Ea.
04131	1 Ea.	7.00	2 3/8"		* CALL *
04132	1 Ea.	8.00	2 7/8"		* CALL *
04133	1 Ea.	10.60	4"		* CALL *

*** SLEEVE**



RECORD #	QTY.	WEIGHT	SIZE	QTY.	PRICE/Ea.	PRICE/Ea.
04180	1 Ea.	.45	1 3/8"			* CALL *
04181	1 Ea.	.62	1 5/8"			* CALL *
04182	1 Ea.	.70	1 7/8"			* CALL *
04183	1 Ea.	.72	1 5/8" (7" Long)			* CALL *
04189	1 Ea.	.87	1 5/8" EXPANSION TYPE			* CALL *

*** TENSION BAR - STEEL**

3/16" X 5/8"



RECORD #	QTY.	WEIGHT	SIZE	QTY.	PRICE/Ea.	PRICE/Ea.
04310	1 Ea.	1.13	34"			* CALL *
04311	1 Ea.	1.33	40"			* CALL *
04312	1 Ea.	1.53	46"			* CALL *
04313	1 Ea.	1.92	58"			* CALL *
04314	1 Ea.	2.32	70"			* CALL *

3/16" X 3/4"



RECORD #	QTY.	WEIGHT	SIZE	QTY.	PRICE/Ea.	PRICE/Ea.
04315	1 Ea.	1.35	34"			* CALL *
04316	1 Ea.	1.59	40"			* CALL *
04317	1 Ea.	1.83	46"			* CALL *
04318	1 Ea.	2.31	58"			* CALL *
04319	1 Ea.	2.79	70"			* CALL *
04320	1 Ea.	3.27	82"			* CALL *
04321	1 Ea.	3.74	94"			* CALL *
04322	1 Ea.	4.70	118"			* CALL *
04323	1 Ea.	5.66	142"			* CALL *

1/4" X 3/4"



RECORD #	QTY.	WEIGHT	SIZE	QTY.	PRICE/Ea.	PRICE/Ea.
04324	1 Ea.	3.08	58"			* CALL *
04325	1 Ea.	3.72	70"			* CALL *
04326	1 Ea.	4.36	82"			* CALL *
04327	1 Ea.	5.00	94"			* CALL *
04328	1 Ea.	6.27	118"			* CALL *
04329	1 Ea.	7.55	142"			* CALL *

*** TRUSS ROD**
 * 3/8"



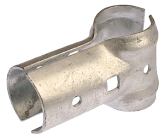
RECORD #	QTY.	WEIGHT	SIZE	QTY. PRICE/Ea.	PRICE/Ea.
04196	1 Ea.	3.95	10' 6"		* CALL *
04197	1 Ea.	4.13	11'		* CALL *
04198	1 Ea.	4.51	12'		* CALL *
04199	1 Ea.	5.60	15'		* CALL *
04200	1 Ea.	7.52	20'		* CALL *

*** TIGHTENER**



RECORD #	QTY.	WEIGHT	SIZE	QTY. PRICE/Ea.	PRICE/Ea.
04207	1 Ea.	.24	RESIDENTIAL TRUSS ROD		* CALL *
04208	1 Ea.	.45	IND. TRUSS ROD TIGHTENER		* CALL *

*** BRACE CLAMP**



RECORD #	QTY.	WEIGHT	SIZE	QTY. PRICE/Ea.	PRICE/Ea.
04347	1 Ea.	.32	1 3/8" X 1 3/8"		* CALL *
04348	1 Ea.	.45	1 5/8" X 1 3/8"		* CALL *
04349	1 Ea.	.50	1 7/8" X 1 3/8"		* CALL *
04350	1 Ea.	.50	2 3/8" X 1 3/8"		* CALL *
04351	1 Ea.	.50	1 5/8" X 1 5/8"		* CALL *
04352	1 Ea.	.54	1 7/8" X 1 5/8"		* CALL *
04353	1 Ea.	.65	2 3/8" X 1 5/8"		* CALL *
04354	1 Ea.	.76	2 7/8" X 1 5/8"		* CALL *
04355	1 Ea.	.88	4" X 1 5/8"		* CALL *
04356	1 Ea.	.61	1 7/8" X 1 7/8"		* CALL *
04357	1 Ea.	.70	2 3/8" X 1 7/8"		* CALL *

*** LINE RAIL CLAMP**



RECORD #	QTY.	WEIGHT	SIZE	QTY. PRICE/Ea.	PRICE/Ea.
04379	1 Ea.	.56	1 3/8" X 1 3/8"		* CALL *
04380	1 Ea.	.58	1 5/8" X 1 3/8"		* CALL *
04381	1 Ea.	.72	1 7/8" X 1 3/8"		* CALL *
04382	1 Ea.	.75	2 3/8" X 1 3/8"		* CALL *
04383	1 Ea.	.60	1 5/8" X 1 5/8"		* CALL *
04384	1 Ea.	.73	1 7/8" X 1 5/8"		* CALL *
04385	1 Ea.	.80	2 3/8" X 1 5/8"		* CALL *
04386	1 Ea.	1.00	2 7/8" X 1 5/8"		* CALL *
04387	1 Ea.	.74	1 7/8" X 1 7/8"		* CALL *
04388	1 Ea.	1.00	4" X 1 5/8"		* CALL *

*** CORNER RAIL CLAMP**



RECORD #	QTY.	WEIGHT	SIZE	QTY.	PRICE/Ea.	PRICE/Ea.
04389	1 Ea.	.50	1 3/8" X 1 3/8"			* CALL *
04390	1 Ea.	.68	1 7/8" X 1 3/8"			* CALL *
04391	1 Ea.	.88	2 3/8" X 1 3/8"			* CALL *
04392	1 Ea.	.88	2 3/8" X 1 5/8"			* CALL *
04393	1 Ea.	.96	2 7/8" X 1 5/8"			* CALL *

*** SADDLE CLAMP**



RECORD #	QTY.	WEIGHT	SIZE	QTY.	PRICE/Ea.	PRICE/Ea.
04394	1 Ea.	.84	1 3/8" X 1 3/8"			* CALL *
04395	1 Ea.	.84	1 5/8" X 1 5/8"			* CALL *

*** CARRIAGE BOLT**



RECORD #	QTY.	WEIGHT	SIZE	QTY.	PRICE/Ea.	PRICE/Ea.
04399	1 Ea.	.02	1/4" X 3/4"			* CALL *
04400	1 Ea.	.04	5/16" X 1 1/4"			* CALL *
04401	1 Ea.	.05	5/16" X 1 1/2"			* CALL *
04402	1 Ea.	.05	5/16" X 1 3/4"			* CALL *
04403	1 Ea.	.05	5/16" X 2"			* CALL *
04404	1 Ea.	.06	5/16" X 2 1/4"			* CALL *
04405	1 Ea.	.07	5/16" X 2 1/2"			* CALL *
04406	1 Ea.	.09	5/16" X 4 1/2"			* CALL *
04407	1 Ea.	.07	3/8" X 1 1/4"			* CALL *
04408	1 Ea.	.08	3/8" X 1 1/2"			* CALL *
04409	1 Ea.	.09	3/8" X 2"			* CALL *
04410	1 Ea.	.09	3/8" X 2 1/4"			* CALL *
04411	1 Ea.	.10	3/8" X 2 1/2"			* CALL *
04412	1 Ea.	.11	3/8" X 3"			* CALL *
04413	1 Ea.	.13	3/8" X 3 1/2"			* CALL *
04414	1 Ea.	.12	3/8" X 4"			* CALL *

*** TEK SCREW**



RECORD #	QTY.	WEIGHT	SIZE	QTY.	PRICE/Ea.	PRICE/Ea.
04432	1 Ea.	.01	3/4"			* CALL *



* HOG RING



RECORD #	QTY.	WEIGHT	SIZE	QTY. PRICE/Lb.	PRICE/Lb.
04448	1 Lb.	10.00	9 GA. ALUMINUM - 264/LB		* CALL *
04449	1 Lb.	25.00	12 1/2 GA. STEEL - 224/LB		* CALL *
04450	1 Lb.	25.00	9 GA. STEEL - 88/LB		* CALL *

* TIE WIRE

* 11 GA. ALUMINUM - SOLD IN FULL BAGS OF 100 PIECES



RECORD #	QTY.	WEIGHT	SIZE	QTY. PRICE/Ea.	PRICE/Ea.
04489	1 Ea.	.01	6 1/2" #33		* CALL *

* 9 GA. ALUMINUM - SOLD IN FULL BAGS OF 100 PIECES



RECORD #	QTY.	WEIGHT	SIZE	QTY. PRICE/Ea.	PRICE/Ea.
04490	1 Ea.	.01	6 1/2" #13		* CALL *
04491	1 Ea.	.02	8 1/4" #16		* CALL *
04492	1 Ea.	.02	10 1/2"		* CALL *
04493	1 Ea.	.02	12 1/2"		* CALL *

* 12 GA. STEEL - SOLD IN FULL BAGS OF 100 PIECES



RECORD #	QTY.	WEIGHT	SIZE	QTY. PRICE/Ea.	PRICE/Ea.
04503	1 Ea.	.02	6"		* CALL *
04504	1 Ea.	.02	6 1/2"		* CALL *
04505	1 Ea.	.02	7 1/2"		* CALL *
04506	1 Ea.	.02	8 1/4"		* CALL *
04507	1 Ea.	.03	10 1/2"		* CALL *



*** TENSION WIRE - GALVANIZED**

* SMOOTH WIRE - 1700'/COIL

RECORD #	QTY.	WEIGHT	SIZE	QTY.	PRICE/Lb.	PRICE/Lb.
04530	1 Lb.	1.00	9 GA.			* CALL *

* 2 STRAND TWISTED - 1320'/COIL

RECORD #	QTY.	WEIGHT	SIZE	QTY.	PRICE/RL.	PRICE/RL.
04532	1 RL.	44.00	14 GA.			* CALL *
04533	1 RL.	62.00	12 1/2 GA.			* CALL *

* COIL SPRING - 1000'/COIL

RECORD #	QTY.	WEIGHT	SIZE	QTY.	PRICE/Lb.	PRICE/Lb.
04534	1 Lb.	1.00	7 GA.			* CALL *

*** BARB WIRE**

* 1320'/COIL

RECORD #	QTY.	WEIGHT	SIZE	QTY.	PRICE/RL.	PRICE/RL.
04547	1 RL.	43.00	15 1/2 GA. 4 PT. HI-LITE			* CALL *
04548	1 ROLL	82.00	4 PT. DOMESTIC			* CALL *
04549	1 ROLL	82.00	4 PT. IMPORT			* CALL *
04550	1 ROLL	88.00	4 PT. GALV. CLASS III IMP.			* CALL *
04551	1 RL.	81.00	4 PT. ALUMINIZED			* CALL *
04552	1 RL.	88.00	4 PT. DOM. CLASS III			* CALL *

*** BARBED OBSTACLE WIRE**

(18" SPACING) GALVANIZED/STAINLESS, GALVANIZED/GALVANIZED, STAINLESS/STAINLESS

RECORD #	QTY.	WEIGHT	SIZE	QTY.	PRICE/COIL	PRICE/COIL
04554	1 COIL	.16	18" DIA. - 50'/COIL			* CALL *
04555	1 COIL	18.20	24" DIA. - 50'/COIL			* CALL *

*** CEMENT**



RECORD #	SIZE	PRICE/Ea.
04558	SAK CRETE 60 LB BAG	* CALL *



RECORD #	QTY.	WEIGHT	SIZE	QTY. PRICE/Ea.	PRICE/Ea.
04559	1 Ea.	50.00	QUIK ROK 50 LB PAIL		* CALL *

*** GALVANIZED PLATES**



RECORD #	QTY.	WEIGHT	SIZE	QTY. PRICE/Ea.	PRICE/Ea.
04560	1 Ea.	1.26	3" X 6" X 1/4" GALV		* CALL *
04561	1 Ea.	2.28	4" X 4" X 1/4" GALV		* CALL *
04562	1 Ea.	2.55	6" X 6" X 1/4" GALV		* CALL *
04563	1 Ea.	0.00	8" X 8" X 1/4" GALV		* CALL *