



*** VINYL COATED CHAIN LINK FABRIC**

* 9 GA. EXTRUDED (2" MESH)



RECORD #	QTY.	WEIGHT	SIZE	QTY.	PRICE/Ft.	PRICE/Ft.
00426	1 Ft.	1.08	36" 9 GA. GREEN EXTRUDED (2" Mesh) KK			* CALL *
00427	1 Ft.	1.26	42" 9 GA. GREEN EXTRUDED (2" Mesh) KK			* CALL *
00428	1 Ft.	1.44	48" 9 GA. GREEN EXTRUDED (2" Mesh) KK			* CALL *
00429	1 Ft.	1.80	60" 9 GA. GREEN EXTRUDED (2" Mesh) KK			* CALL *
00430	1 Ft.	2.16	72" 9 GA. GREEN EXTRUDED (2" Mesh) KK			* CALL *
00431	1 Ft.	2.52	84" 9 GA. GREEN EXTRUDED (2" Mesh) KK			* CALL *
00432	1 Ft.	2.90	96" 9 GA. GREEN EXTRUDED (2" Mesh) KK			* CALL *
00433	1 Ft.	3.60	120" 9 GA. GREEN EXTRUDED (2" Mesh) KK			* CALL *
00434	1 Ft.	4.35	144" 9 GA. GREEN EXTRUDED (2" Mesh) KK			* CALL *

* 9 GA. EXTRUDED (1 3/4" MESH)



RECORD #	QTY.	WEIGHT	SIZE	QTY.	PRICE/Ft.	PRICE/Ft.
00444	1 Ft.	4.35	120" 9 GA. GREEN EXTRUDED (1 3/4" Mesh) KK			* CALL *
00445	1 Ft.	5.20	144" 9 GA. GREEN EXTRUDED (1 3/4" Mesh) KK			* CALL *

* 11 GA. CORE (8 GA. FINISH) EXTRUDED BONDED CLASS 2A (2" MESH)



RECORD #	QTY.	WEIGHT	SIZE	QTY.	PRICE/Ft.	PRICE/Ft.
00435	1 Ft.	1.61	36" 8 GA. GREEN EXTRUDED (2" Mesh) KK			* CALL *
00436	1 Ft.	1.87	42" 8 GA. GREEN EXTRUDED (2" Mesh) KK			* CALL *
00437	1 Ft.	2.14	48" 8 GA. GREEN EXTRUDED (2" Mesh) KK			* CALL *
00438	1 Ft.	2.68	60" 8 GA. GREEN EXTRUDED (2" Mesh) KK			* CALL *
00439	1 Ft.	3.21	72" 8 GA. GREEN EXTRUDED (2" Mesh) KK			* CALL *
00440	1 Ft.	3.57	84" 8 GA. GREEN EXTRUDED (2" Mesh) KK			* CALL *
00441	1 Ft.	4.28	96" 8 GA. GREEN EXTRUDED (2" Mesh) KK			* CALL *
00442	1 Ft.	5.35	120" 8 GA. GREEN EXTRUDED (2" Mesh) KK			* CALL *
00443	1 Ft.	6.42	144" 8 GA. GREEN EXTRUDED (2" Mesh) KK			* CALL *
00449	1 Ft.	3.12	72" 11 GA. CORE (8 GA. FINISH) GREEN EST. & BND. (2" Mesh) KT			* CALL *
00450	1 Ft.	3.64	84" 11 GA. CORE (8 GA. FINISH) GREEN EST. & BND. (2" Mesh) KT			* CALL *
00451	1 Ft.	4.16	96" 11 GA. CORE (8 GA. FINISH) GREEN EST. & BND. (2" Mesh) KT			* CALL *

* VINYL COATED PRODUCTS ARE AVAILABLE IN BLACK, GREEN, AND BROWN.

* BK OR BB AVAILABLE IN 72" OR HIGHER.



*** VINYL COATED CHAIN LINK FABRIC**

* 11 GA. CORE (8 GA. FINISH) EXTRUDED BONDED CLASS 2A (1 3/4" MESH)



RECORD #	QTY.	WEIGHT	SIZE	QTY. PRICE/Ft.	PRICE/Ft.
00464	1 Ft.	6.04	120" 11 GA. CORE (8 GA. FINISH) GREEN EXT. & BND. (1 3/4" Mesh) KK		* CALL *
00465	1 Ft.	7.25	144" 11 GA. CORE (8 GA. FINISH) GREEN EXT. & BND. (1 3/4" Mesh) KK		* CALL *

* 9 GA. CORE (6 GA. FINISH) EXTRUDED BONDED CLASS 2A (1 3/4" MESH)



RECORD #	QTY.	WEIGHT	SIZE	QTY. PRICE/Ft.	PRICE/Ft.
00466	1 Ft.	9.00	120" 9 GA. CORE (6 GA. FINISH) GREEN EXT. & BND. (1 3/4" Mesh) KK		* CALL *
00467	1 Ft.	10.84	144" 9 GA. CORE (6 GA. FINISH) GREEN EXT. & BND. (1 3/4" Mesh) KK		* CALL *

* 9 GA. CORE (6 GA. FINISH) EXTRUDED BONDED CLASS 2A (2" MESH)



RECORD #	QTY.	WEIGHT	SIZE	QTY. PRICE/Ft.	PRICE/Ft.
00452	1 Ft.	2.43	36" 9 GA. CORE (6 GA. FINISH) GREEN EXT. & BND. (2" Mesh) KK		* CALL *
00453	1 Ft.	2.84	42" 9 GA. CORE (6 GA. FINISH) GREEN EXT. & BND. (2" Mesh) KK		* CALL *
00454	1 Ft.	3.25	48" 9 GA. CORE (6 GA. FINISH) GREEN EXT. & BND. (2" Mesh) KK		* CALL *
00455	1 Ft.	4.05	60" 9 GA. CORE (6 GA. FINISH) GREEN EXT. & BND. (2" Mesh) KK		* CALL *
00456	1 Ft.	4.50	72" 9 GA. CORE (6 GA. FINISH) GREEN EXT. & BND. (2" Mesh) KK		* CALL *
00457	1 Ft.	5.25	84" 9 GA. CORE (6 GA. FINISH) GREEN EXT. & BND. (2" Mesh) KK		* CALL *
00458	1 Ft.	6.00	96" 9 GA. CORE (6 GA. FINISH) GREEN EXT. & BND. (2" Mesh) KK		* CALL *
00459	1 Ft.	7.50	120" 9 GA. CORE (6 GA. FINISH) GREEN EXT. & BND. (2" Mesh) KK		* CALL *
00460	1 Ft.	9.00	144" 9 GA. CORE (6 GA. FINISH) GREEN EXT. & BND. (2" Mesh) KK		* CALL *

* VINYL COATED PRODUCTS ARE AVAILABLE IN BLACK, GREEN, AND BROWN.

* BK OR BB AVAILABLE IN 72" OR HIGHER.



*** VINYL COATED CHAIN LINK FABRIC**

*** 9 GA. CORE (8 GA. FINISH) (2" MESH) KK - FUSED & BONDED CLASS 2B**



RECORD #	QTY.	WEIGHT	SIZE	QTY.	PRICE/Ft.	PRICE/Ft.
00472	1 Ft.	2.25	36" 9 GA. CORE (8 GA. FINISH) GREEN (2" Mesh) KK			* CALL *
00474	1 Ft.	2.63	42" 9 GA. CORE (8 GA. FINISH) GREEN (2" Mesh) KK			* CALL *
00475	1 Ft.	3.00	48" 9 GA. CORE (8 GA. FINISH) GREEN (2" Mesh) KK			* CALL *
00476	1 Ft.	3.75	60" 9 GA. CORE (8 GA. FINISH) GREEN (2" Mesh) KK			* CALL *
00477	1 Ft.	4.50	72" 9 GA. CORE (8 GA. FINISH) GREEN (2" Mesh) KK			* CALL *
00478	1 Ft.	5.25	84" 9 GA. CORE (8 GA. FINISH) GREEN (2" Mesh) KK			* CALL *
00479	1 Ft.	6.00	96" 9 GA. CORE (8 GA. FINISH) GREEN (2" Mesh) KK			* CALL *
00480	1 Ft.	7.50	120" 9 GA. CORE (8 GA. FINISH) GREEN (2" Mesh) KK			* CALL *
00481	1 Ft.	9.00	144" 9 GA. CORE (8 GA. FINISH) GREEN (2" Mesh) KK			* CALL *
00482	1 Ft.	4.50	72" 9 GA. CORE (8 GA. FINISH) GREEN (2" Mesh) BK			* CALL *
00483	1 Ft.	5.25	84" 9 GA. CORE (8 GA. FINISH) GREEN (2" Mesh) BK			* CALL *
00484	1 Ft.	6.00	96" 9 GA. CORE (8 GA. FINISH) GREEN (2" Mesh) BK			* CALL *
00485	1 Ft.	7.50	120" 9 GA. CORE (8 GA. FINISH) GREEN (2" Mesh) BK			* CALL *
00486	1 Ft.	9.00	144" 9 GA. CORE (8 GA. FINISH) GREEN (2" Mesh) BK			* CALL *

*** 9 GA. CORE (8 GA. FINISH) (1 3/4" MESH) - FUSED & BONDED CLASS 2B**



RECORD #	QTY.	WEIGHT	SIZE	QTY.	PRICE/Ft.	PRICE/Ft.
00487	1 Ft.	9.00	120" 9 GA. CORE (8 GA. FINISH) GREEN (1 3/4" Mesh) KK			* CALL *
00488	1 Ft.	10.84	144" 9 GA. CORE (8 GA. FINISH) GREEN (1 3/4" Mesh) KK			* CALL *

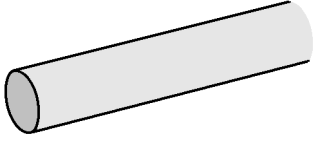
* VINYL COATED PRODUCTS ARE AVAILABLE IN BLACK, GREEN, AND BROWN.

* BK OR BB AVAILABLE IN 72" OR HIGHER.



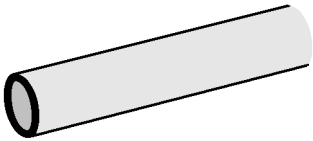
COLOR SYSTEMS - 21 TO 24 FT.

*** 16 GA. TUBING**



RECORD #	QTY.	WEIGHT	SIZE	QTY. PRICE/Ft.	PRICE/Ft.
01131	1 Ft.	.87	1 3/8" SWEDGE END		* CALL *
01132	1 Ft.	1.10	1 5/8" SWEDGE END		* CALL *
01135	1 Ft.	1.27	1 7/8"		* CALL *
01136	1 Ft.	1.60	2 3/8"		* CALL *

*** 16 GA. POSTS**



RECORD #	QTY.	WEIGHT	SIZE	QTY. PRICE/Ea.	PRICE/Ea.
02302	1 Ea.	6.66	1 5/8" X 6'		* CALL *
02304	1 Ea.	7.77	1 5/8" X 7'		* CALL *
02307	1 Ea.	8.88	1 5/8" X 8'		* CALL *

RECORD #	QTY.	WEIGHT	SIZE	QTY. PRICE/Ea.	PRICE/Ea.
02322	1 Ea.	7.62	1 7/8" X 6'		* CALL *
02324	1 Ea.	8.89	1 7/8" X 7'		* CALL *
02327	1 Ea.	10.16	1 7/8" X 8'		* CALL *

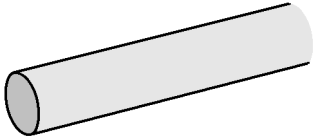
RECORD #	QTY.	WEIGHT	SIZE	QTY. PRICE/Ea.	PRICE/Ea.
02342	1 Ea.	9.60	2 3/8" X 6'		* CALL *
02344	1 Ea.	11.20	2 3/8" X 7'		* CALL *
02347	1 Ea.	12.80	2 3/8" X 8'		* CALL *

* VINYL COATED PRODUCTS ARE AVAILABLE IN BLACK, GREEN, AND BROWN.



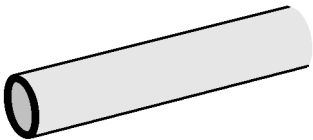
COLOR SYSTEMS - 21 TO 24 FT.

*** SS-20 TUBING**



RECORD #	QTY.	WEIGHT	SIZE	QTY.	PRICE/Ft.	PRICE/Ft.
01137	1 Ft.	1.46	1 5/8" SWEDGE END			* CALL *
01139	1 Ft.	1.75	1 7/8"			* CALL *
01140	1 Ft.	2.29	2 3/8"			* CALL *
01141	1 Ft.	3.25	2 7/8"			* CALL *

*** SS-20 POSTS**



RECORD #	QTY.	WEIGHT	SIZE	QTY.	PRICE/Ea.	PRICE/Ea.
02452	1 Ea.	8.76	1 5/8" X 6'			* CALL *
02454	1 Ea.	10.22	1 5/8" X 7'			* CALL *
02457	1 Ea.	11.68	1 5/8" X 8'			* CALL *
02458	1 Ea.	13.14	1 5/8" X 9'			* CALL *
02459	1 Ea.	14.60	1 5/8" X 10'			* CALL *

RECORD #	QTY.	WEIGHT	SIZE	QTY.	PRICE/Ea.	PRICE/Ea.
02472	1 Ea.	10.50	1 7/8" X 6'			* CALL *
02474	1 Ea.	12.25	1 7/8" X 7'			* CALL *
02477	1 Ea.	14.00	1 7/8" X 8'			* CALL *
02479	1 Ea.	15.75	1 7/8" X 9'			* CALL *
02480	1 Ea.	17.50	1 7/8" X 10'			* CALL *

RECORD #	QTY.	WEIGHT	SIZE	QTY.	PRICE/Ea.	PRICE/Ea.
02490	1 Ea.	13.80	2 3/8" X 6'			* CALL *
02491	1 Ea.	16.10	2 3/8" X 7'			* CALL *
02492	1 Ea.	18.40	2 3/8" X 8'			* CALL *
02494	1 Ea.	20.70	2 3/8" X 9'			* CALL *
02495	1 Ea.	23.00	2 3/8" X 10'			* CALL *
02496	1 Ea.	25.30	2 3/8" X 11'			* CALL *
02497	1 Ea.	27.60	2 3/8" X 12'			* CALL *
02499	1 Ea.	29.90	2 3/8" X 13'			* CALL *

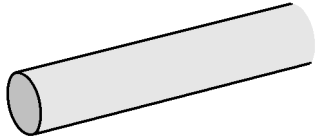
RECORD #	QTY.	WEIGHT	SIZE	QTY.	PRICE/Ea.	PRICE/Ea.
02500	1 Ea.	19.50	2 7/8" X 6'			* CALL *
02501	1 Ea.	22.75	2 7/8" X 7'			* CALL *
02502	1 Ea.	26.00	2 7/8" X 8'			* CALL *
02503	1 Ea.	29.25	2 7/8" X 9'			* CALL *
02504	1 Ea.	32.50	2 7/8" X 10'			* CALL *
02505	1 Ea.	34.13	2 7/8" X 10' 6"			* CALL *
02506	1 Ea.	37.75	2 7/8" X 11'			* CALL *
02507	1 Ea.	39.00	2 7/8" X 12'			* CALL *
02508	1 Ea.	42.25	2 7/8" X 13'			* CALL *

* VINYL COATED PRODUCTS ARE AVAILABLE IN BLACK, GREEN, AND BROWN.



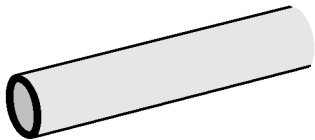
COLOR SYSTEMS - 21 TO 24 FT.

*** SS-40 TUBING**



RECORD #	QTY.	WEIGHT	SIZE	QTY.	PRICE/Ft.	PRICE/Ft.
01143	1 Ft.	1.83	1 5/8"			* CALL *
01144	1 Ft.	2.28	1 7/8"			* CALL *
01145	1 Ft.	3.12	2 3/8"			* CALL *
01146	1 Ft.	4.78	2 7/8"			* CALL *
01147	1 Ft.	6.60	4"			* CALL *

*** SS-40 POSTS**



RECORD #	QTY.	WEIGHT	SIZE	QTY.	PRICE/Ea.	PRICE/Ea.
02698	1 Ea.	13.50	1 7/8" X 6'			* CALL *
02699	1 Ea.	15.75	1 7/8" X 7'			* CALL *
02700	1 Ea.	18.00	1 7/8" X 8'			* CALL *
02705	1 Ea.	20.25	1 7/8" X 9'			* CALL *
02707	1 Ea.	22.50	1 7/8" X 10'			* CALL *
02708	1 Ea.	23.63	1 7/8" X 10'6"			* CALL *

RECORD #	QTY.	WEIGHT	SIZE	QTY.	PRICE/Ea.	PRICE/Ea.
02718	1 Ea.	18.66	2 3/8" X 6'			* CALL *
02719	1 Ea.	21.77	2 3/8" X 7'			* CALL *
02720	1 Ea.	24.88	2 3/8" X 8'			* CALL *
02722	1 Ea.	27.99	2 3/8" X 9'			* CALL *
02724	1 Ea.	31.10	2 3/8" X 10'			* CALL *
02725	1 Ea.	32.66	2 3/8" X 10'6"			* CALL *
02726	1 Ea.	34.21	2 3/8" X 11'			* CALL *
02727	1 Ea.	37.32	2 3/8" X 12'			* CALL *
02728	1 Ea.	40.43	2 3/8" X 13'			* CALL *
02729	1 Ea.	46.65	2 3/8" X 15'			* CALL *

RECORD #	QTY.	WEIGHT	SIZE	QTY.	PRICE/Ea.	PRICE/Ea.
02730	1 Ea.	37.12	2 7/8" X 8'			* CALL *
02731	1 Ea.	41.76	2 7/8" X 9'			* CALL *
02732	1 Ea.	46.40	2 7/8" X 10'			* CALL *
02733	1 Ea.	48.72	2 7/8" X 10'6"			* CALL *
02734	1 Ea.	51.04	2 7/8" X 11'			* CALL *
02735	1 Ea.	55.68	2 7/8" X 12'			* CALL *
02736	1 Ea.	60.32	2 7/8" X 13'			* CALL *
02737	1 Ea.	69.60	2 7/8" X 15'			* CALL *

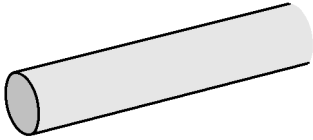
RECORD #	QTY.	WEIGHT	SIZE	QTY.	PRICE/Ea.	PRICE/Ea.
02738	1 Ea.	69.00	4" X 10'6"			* CALL *
02739	1 Ea.	73.00	4" X 11'			* CALL *
02740	1 Ea.	79.00	4" X 12'			* CALL *
02741	1 Ea.	85.58	4" X 13'			* CALL *

* VINYL COATED PRODUCTS ARE AVAILABLE IN BLACK, GREEN, AND BROWN.



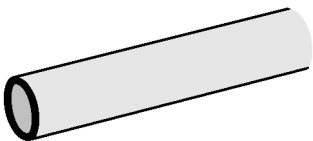
COLOR SYSTEMS - 21 TO 24 FT.

*** VINYL COATED FULL WEIGHT STD PIPE**



RECORD #	QTY.	WEIGHT	SIZE	QTY. PRICE/Ft.	PRICE/Ft.
01189	1 Ft.	2.27	1 5/8"		* CALL *
01190	1 Ft.	2.72	1 7/8"		* CALL *
01191	1 Ft.	3.65	2 3/8"		* CALL *
01192	1 Ft.	5.79	2 7/8"		* CALL *
01193	1 Ft.	9.10	4"		* CALL *
01194	1 Ft.	18.97	6 5/8"		* CALL *

*** PIPE POST**



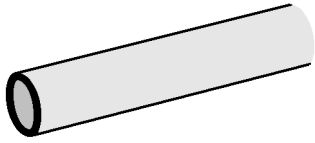
RECORD #	QTY.	WEIGHT	SIZE	QTY. PRICE/Ea.	PRICE/Ea.
03039	1 Ea.	16.32	1 7/8" X 6'		* CALL *
03040	1 Ea.	19.04	1 7/8" X 7'		* CALL *
03041	1 Ea.	21.76	1 7/8" X 8'		* CALL *
03042	1 Ea.	23.12	1 7/8" X 8'8"		* CALL *
03043	1 Ea.	24.48	1 7/8" X 9'		* CALL *
03044	1 Ea.	25.84	1 7/8" X 9'8"		* CALL *
03045	1 Ea.	27.20	1 7/8" X 10'		* CALL *
03046	1 Ea.	29.01	1 7/8" X 10'6"		* CALL *

RECORD #	QTY.	WEIGHT	SIZE	QTY. PRICE/Ea.	PRICE/Ea.
03047	1 Ea.	21.90	2 3/8" X 6'		* CALL *
03048	1 Ea.	25.55	2 3/8" X 7'		* CALL *
03049	1 Ea.	29.20	2 3/8" X 8'		* CALL *
03050	1 Ea.	31.65	2 3/8" X 8'8"		* CALL *
03051	1 Ea.	32.85	2 3/8" X 9'		* CALL *
03052	1 Ea.	35.28	2 3/8" X 9'8"		* CALL *
03053	1 Ea.	36.50	2 3/8" X 10'		* CALL *
03054	1 Ea.	38.33	2 3/8" X 10'6"		* CALL *
03055	1 Ea.	40.15	2 3/8" X 11'		* CALL *
03056	1 Ea.	43.80	2 3/8" X 12'		* CALL *
03057	1 Ea.	47.45	2 3/8" X 13'		* CALL *
03058	1 Ea.	54.75	2 3/8" X 15'		* CALL *

* VINYL COATED PRODUCTS ARE AVAILABLE IN BLACK, GREEN, AND BROWN.



* PIPE POST



RECORD #	QTY.	WEIGHT	SIZE	QTY. PRICE/Ea.	PRICE/Ea.
03059	1 Ea.	46.32	2 7/8" X 8'		* CALL *
03060	1 Ea.	52.11	2 7/8" X 9'		* CALL *
03061	1 Ea.	57.90	2 7/8" X 10'		* CALL *
03062	1 Ea.	60.80	2 7/8" X 10' 6"		* CALL *
03063	1 Ea.	63.69	2 7/8" X 11'		* CALL *
03064	1 Ea.	69.48	2 7/8" X 12'		* CALL *
03065	1 Ea.	75.27	2 7/8" X 13'		* CALL *
03066	1 Ea.	86.85	2 7/8" X 15'		* CALL *

RECORD #	QTY.	WEIGHT	SIZE	QTY. PRICE/Ea.	PRICE/Ea.
03067	1 Ea.	91.00	4" X 10'		* CALL *
03068	1 Ea.	95.55	4" X 10' 6"		* CALL *
03069	1 Ea.	100.10	4" X 11'		* CALL *
03070	1 Ea.	109.20	4" X 12'		* CALL *
03071	1 Ea.	118.30	4" X 13'		* CALL *
03072	1 Ea.	136.50	4" X 15'		* CALL *

RECORD #	QTY.	WEIGHT	SIZE	QTY. PRICE/Ea.	PRICE/Ea.
03079	1 Ea.	189.70	6 5/8" X 10'		* CALL *
03080	1 Ea.	199.10	6 5/8" X 10' 6"		* CALL *
03081	1 Ea.	208.67	6 5/8" X 11'		* CALL *
03082	1 Ea.	227.64	6 5/8" X 12'		* CALL *
03083	1 Ea.	246.61	6 5/8" X 13'		* CALL *
03084	1 Ea.	284.55	6 5/8" X 15'		* CALL *

* VINYL COATED PRODUCTS ARE AVAILABLE IN BLACK, GREEN, AND BROWN.

*** TENSION BAND - VINYL COATED**

* REGULAR



RECORD #	QTY.	WEIGHT	SIZE	QTY. PRICE/Ea.	PRICE/Ea.
03702	1 Ea.	.14	1 5/8"		* CALL *
03703	1 Ea.	.16	1 7/8"		* CALL *
03704	1 Ea.	.18	2 3/8"		* CALL *
03705	1 Ea.	.22	2 7/8"		* CALL *
03706	1 Ea.	.29	4"		* CALL *

*** TENSION BAND - VINYL COATED**

* BEVELED



RECORD #	QTY.	WEIGHT	SIZE	QTY. PRICE/Ea.	PRICE/Ea.
03712	1 Ea.	.64	6 5/8"		* CALL *

*** BRACE BAND - VINYL COATED**

* REGULAR



RECORD #	QTY.	WEIGHT	SIZE	QTY. PRICE/Ea.	PRICE/Ea.
03818	1 Ea.	.15	1 5/8"		* CALL *
03819	1 Ea.	.18	1 7/8"		* CALL *
03820	1 Ea.	.21	2 3/8"		* CALL *
03821	1 Ea.	.26	2 7/8"		* CALL *
03822	1 Ea.	.34	4"		* CALL *

*** BRACE BAND - VINYL COATED**

* BEVELED



RECORD #	QTY.	WEIGHT	SIZE	QTY. PRICE/Ea.	PRICE/Ea.
03828	1 Ea.	.76	6 5/8"		* CALL *

* VINYL COATED PRODUCTS ARE AVAILABLE IN BLACK, GREEN, AND BROWN.

*** EYE TOP - VINYL COATED**

*** ALUMINUM**



RECORD #	QTY.	WEIGHT	SIZE	QTY. PRICE/Ea.	PRICE/Ea.
04032	1 Ea.	.22	1 5/8" X 1 3/8"		* CALL *
04033	1 Ea.	.26	1 7/8" X 1 3/8"		* CALL *

*** EYE TOP - VINYL COATED**

*** STEEL**



RECORD #	QTY.	WEIGHT	SIZE	QTY. PRICE/Ea.	PRICE/Ea.
04042	1 Ea.	.54	1 7/8" X 1 5/8"		* CALL *
04043	1 Ea.	.61	2 3/8" X 1 5/8"		* CALL *
04044	1 Ea.	1.08	2 7/8" X 1 5/8"		* CALL *

*** DOME CAP - VINYL COATED**

*** ALUMINUM**



RECORD #	QTY.	WEIGHT	SIZE	QTY. PRICE/Ea.	PRICE/Ea.
03933	1 Ea.	.06	1 3/8"		* CALL *
03934	1 Ea.	.09	1 5/8"		* CALL *
03935	1 Ea.	.10	1 7/8"		* CALL *
03936	1 Ea.	.14	2 3/8"		* CALL *
03937	1 Ea.	.65	6 5/8"		* CALL *
03970	1 Ea.	0.00	2 7/8"		* CALL *

*** STEEL**



RECORD #	QTY.	WEIGHT	SIZE	QTY. PRICE/Ea.	PRICE/Ea.
03962	1 Ea.	.53	2 7/8"		* CALL *
03963	1 Ea.	1.00	4"		* CALL *

* VINYL COATED PRODUCTS ARE AVAILABLE IN BLACK, GREEN, AND BROWN.

*** RAIL-END - VINYL COATED**

* ALUMINUM



RECORD #	QTY.	WEIGHT	SIZE	QTY. PRICE/Ea.	PRICE/Ea.
04144	1 Ea.	.13	1 3/8"		* CALL *
04145	1 Ea.	.18	1 5/8"		* CALL *

* STEEL



RECORD #	QTY.	WEIGHT	SIZE	QTY. PRICE/Ea.	PRICE/Ea.
04156	1 Ea.	.39	1 5/8"		* CALL *

*** BARB WIRE ARM - VINYL COATED**

* 45 DEG. PRESSED STEEL



RECORD #	QTY.	WEIGHT	SIZE	QTY. PRICE/Ea.	PRICE/Ea.
04092	1 Ea.	1.68	1 7/8" X 1 5/8"		* CALL *
04093	1 Ea.	1.76	2 3/8" X 1 5/8"		* CALL *

*** SLEEVE - VINYL COATED**



RECORD #	QTY.	WEIGHT	SIZE	QTY. PRICE/Ea.	PRICE/Ea.
04170	1 Ea.	.38	1 3/8"		* CALL *
04171	1 Ea.	.57	1 5/8"		* CALL *

* VINYL COATED PRODUCTS ARE AVAILABLE IN BLACK, GREEN, AND BROWN.

*** TENSION BAR - COLOR - FIBERGLASS**



RECORD #	QTY.	WEIGHT	SIZE	QTY.	PRICE/Ea.	PRICE/Ea.
04209	1 Ea.	.36	34"			* CALL *
04210	1 Ea.	.43	40"			* CALL *
04211	1 Ea.	.49	46"			* CALL *
04212	1 Ea.	.62	58"			* CALL *
04213	1 Ea.	.75	70"			* CALL *
04214	1 Ea.	1.25	118"			* CALL *

*** TENSION BAR - STEEL VINYL COATED**

* 1/4" X 3/4" STEEL



RECORD #	QTY.	WEIGHT	SIZE	QTY.	PRICE/Ea.	PRICE/Ea.
04265	1 Ea.	1.35	34"			* CALL *
04266	1 Ea.	1.59	40"			* CALL *
04267	1 Ea.	1.83	46"			* CALL *
04268	1 Ea.	2.31	58"			* CALL *
04269	1 Ea.	2.79	70"			* CALL *
04270	1 Ea.	3.27	82"			* CALL *
04271	1 Ea.	3.74	94"			* CALL *
04272	1 Ea.	4.70	118"			* CALL *
04273	1 Ea.	5.66	142"			* CALL *

*** TRUSS ROD - VINYL COATED**

* 3/8"



RECORD #	QTY.	WEIGHT	SIZE	QTY.	PRICE/Ea.	PRICE/Ea.
04191	1 Ea.	4.51	12'			* CALL *

*** TIGHTENER**

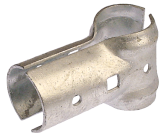


RECORD #	QTY.	WEIGHT	SIZE	QTY.	PRICE/Ea.	PRICE/Ea.
04207	1 Ea.	.24	RESIDENTIAL TRUSS ROD			* CALL *
04208	1 Ea.	.45	IND. TRUSS ROD TIGHTENER			* CALL *

* VINYL COATED PRODUCTS ARE AVAILABLE IN BLACK, GREEN, AND BROWN.

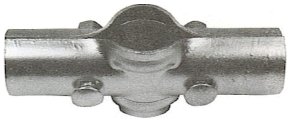


* **BRACE CLAMP - VINYL COATED**



RECORD #	QTY.	WEIGHT	SIZE	QTY.	PRICE/Ea.	PRICE/Ea.
04332	1 Ea.	.33	1 3/8" X 1 3/8"			* CALL *
04333	1 Ea.	.50	1 5/8" X 1 5/8"			* CALL *
04334	1 Ea.	.54	1 7/8" X 1 5/8"			* CALL *

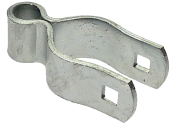
* **LINE RAIL - VINYL COATED**



RECORD #	QTY.	WEIGHT	SIZE	QTY.	PRICE/Ea.	PRICE/Ea.
04358	1 Ea.	.60	1 5/8" X 1 5/8"			* CALL *
04359	1 Ea.	.75	1 7/8" X 1 5/8"			* CALL *
04360	1 Ea.	.80	2 3/8" X 1 5/8"			* CALL *
04361	1 Ea.	1.00	2 7/8" X 1 5/8"			* CALL *

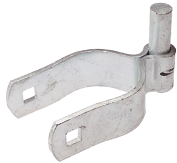
* VINYL COATED PRODUCTS ARE AVAILABLE IN BLACK, GREEN, AND BROWN.

*** GATE FRAME HINGE - VINYL COATED**



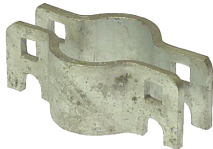
RECORD #	QTY.	WEIGHT	SIZE	QTY.	PRICE/Ea.	PRICE/Ea.
04601	1 Ea.	.38	1 3/8"			* CALL *
04602	1 Ea.	.60	1 5/8" HVY DUTY			* CALL *
04603	1 Ea.	.68	1 7/8" HVY DUTY			* CALL *

*** POST HINGE - VINYL COATED**



RECORD #	QTY.	WEIGHT	SIZE	QTY.	PRICE/Ea.	PRICE/Ea.
04624	1 Ea.	.62	1 7/8"			* CALL *
04625	1 Ea.	.68	2 3/8"			* CALL *
04626	1 Ea.	1.17	2 7/8"			* CALL *

*** FORK LATCH HANGER - VINYL COATED**



RECORD #	QTY.	WEIGHT	SIZE	QTY.	PRICE/Ea.	PRICE/Ea.
05114	1 Ea.	.50	1 3/8"			* CALL *
05115	1 Ea.	.50	1 5/8"			* CALL *
05116	1 Ea.	.56	1 7/8"			* CALL *

*** FORK - VINYL COATED**



RECORD #	QTY.	WEIGHT	SIZE	QTY.	PRICE/Ea.	PRICE/Ea.
05141	1 Ea.	.50	2 3/8"			* CALL *
05142	1 Ea.	.55	2 7/8"			* CALL *
05143	1 Ea.	.68	4"			* CALL *

* VINYL COATED PRODUCTS ARE AVAILABLE IN BLACK, GREEN, AND BROWN.

*** GATE ELL - VINYL COATED**



RECORD #	QTY.	WEIGHT	SIZE	QTY.	PRICE/Ea.	PRICE/Ea.
05052	1 Ea.	.48	1 3/8"			* CALL *
05053	1 Ea.	2.50	1 5/8"			* CALL *

*** INDUSTRIAL HINGE- VINYL COATED**

180 DEGREE



RECORD #	QTY.	WEIGHT	SIZE	QTY.	PRICE/Ea.	PRICE/Ea.
04673	1 Ea.	3.20	2 3/8" X 1 5/8" or 1 7/8"			* CALL *
04674	1 Ea.	3.20	2 7/8" X 1 5/8" or 1 7/8"			* CALL *
04675	1 Ea.	4.20	4" X 1 5/8" or 1 7/8"			* CALL *

*** BULL DOG HINGE - VINYL COATED**



RECORD #	QTY.	WEIGHT	SIZE	QTY.	PRICE/Ea.	PRICE/Ea.
04704	1 Ea.	3.30	2 7/8" X 1 5/8" or 1 7/8"			* CALL *
04705	1 Ea.	3.70	4" X 1 5/8" or 1 7/8"			* CALL *
04706	1 Ea.	5.90	6 5/8" X 1 5/8" or 1 7/8"			* CALL *

*** GATE SCROLL (ALUMINUM) VINYL COATED**

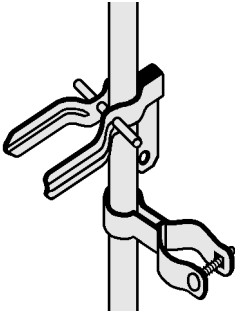


RECORD #	QTY.	WEIGHT	SIZE	QTY.	PRICE/Ea.	PRICE/Ea.
05034	1 Ea.	.27	18"			* CALL *
05035	1 Ea.	.33	24"			* CALL *

* VINYL COATED PRODUCTS ARE AVAILABLE IN BLACK, GREEN, AND BROWN.

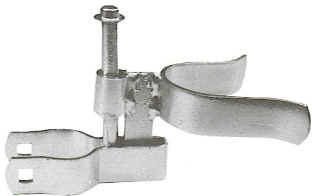
*** DROP ROD ASSEMBLY - VINYL COATED**

*** INDUSTRIAL - 1 3/8" .065 TUBING WITH 1 FORK & 3 GUIDES**



RECORD #	QTY.	WEIGHT	SIZE	QTY.	PRICE/Ea.	PRICE/Ea.
04761	1 Ea.	12.00	1 5/8"			* CALL *
04762	1 Ea.	12.00	1 7/8"			* CALL *

*** INDUSTRIAL LATCH ASSEMBLY-VINYL COAT**



RECORD #	QTY.	WEIGHT	SIZE	QTY.	PRICE/Ea.	PRICE/Ea.
04747	1 Ea.	4.80	1 5/8"			* CALL *
04791	1 Ea.	.96	1 5/8"			* CALL *
04792	1 Ea.	.96	1 7/8"			* CALL *
04793	1 Ea.	.96	1 5/8"			* CALL *
04794	1 Ea.	.96	1 7/8"			* CALL *

*** GATE CLIP - VINYL COATED**



RECORD #	QTY.	WEIGHT	SIZE	QTY.	PRICE/Ea.	PRICE/Ea.
05073	1 Ea.	.13	1 3/8"			* CALL *

* VINYL COATED PRODUCTS ARE AVAILABLE IN BLACK, GREEN, AND BROWN.

*** CANTILEVER GATE LATCH - VINYL COATED**



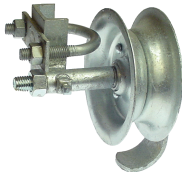
RECORD #	QTY.	WEIGHT	SIZE	QTY. PRICE/Ea.	PRICE/Ea.
04822	1 Ea.	5.00	1 5/8" or 1 7/8" X 2 7/8"		* CALL *
04823	1 Ea.	5.00	1 5/8" or 1 7/8" X 4"		* CALL *

*** PIPE TRACK BRACKET - VINYL COATED**



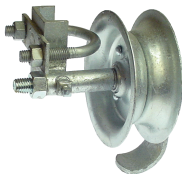
RECORD #	QTY.	WEIGHT	SIZE	QTY. PRICE/Ea.	PRICE/Ea.
04937	1 Ea.	2.55	1 5/8" or 1 7/8" X 1 5/8"		* CALL *

*** REAR WHEEL - VINYL COATED**



RECORD #	QTY.	WEIGHT	SIZE	QTY. PRICE/Ea.	PRICE/Ea.
04921	1 Ea.	2.90	5" DIA.		* CALL *

*** REAR WHEEL ASSEMBLY - VINYL COATED**



RECORD #	QTY.	WEIGHT	SIZE	QTY. PRICE/Ea.	PRICE/Ea.
04929	1 Ea.	4.55	1 5/8"		* CALL *

* VINYL COATED PRODUCTS ARE AVAILABLE IN BLACK, GREEN, AND BROWN.



*** HOG RING - VINYL COATED**
*** STEEL**



RECORD #	QTY.	WEIGHT	SIZE	QTY.	PRICE/BAG	PRICE/BAG
04433	1 BAG	1.50	9 GA. 200/BAG			* CALL *

*** TIE WIRE- VINYL COATED**
*** 11 GA. - SOLD IN FULL BAGS OF 100 PIECES**



RECORD #	QTY.	WEIGHT	SIZE	QTY.	PRICE/Ea.	PRICE/Ea.
04452	1 Ea.	.02	6 1/2" 100/BAG			* CALL *
04454	1 Ea.	.02	8 1/2" 100/BAG			* CALL *

*** 9 GA. - SOLD IN FULL BAGS OF 100 PIECES**



RECORD #	QTY.	WEIGHT	SIZE	QTY.	PRICE/Ea.	PRICE/Ea.
04457	1 Ea.	.03	8 1/2" 100/BAG			* CALL *

*** TENSION WIRE - VINYL COATED**
*** SMOOTH - 3400' / COIL**



RECORD #	QTY.	WEIGHT	SIZE	QTY.	PRICE/Lb.	PRICE/Lb.
04511	1 Lb.	1.00	9 GA.			* CALL *

*** COIL SPRING - 500' / COIL**



RECORD #	QTY.	WEIGHT	SIZE	QTY.	PRICE/RL.	PRICE/RL.
04521	1 RL.	64.00	6 GA.			* CALL *

*** BARB WIRE - VINYL COATED**
*** 1320' / COIL**



RECORD #	QTY.	WEIGHT	SIZE	QTY.	PRICE/ROLL	PRICE/ROLL
04541	1 ROLL	68.00	4 PT. TYPE 2			* CALL *

* VINYL COATED PRODUCTS ARE AVAILABLE IN BLACK, GREEN, AND BROWN.